



## MP 71 Single Point Load Cell



5kg ... 200kg

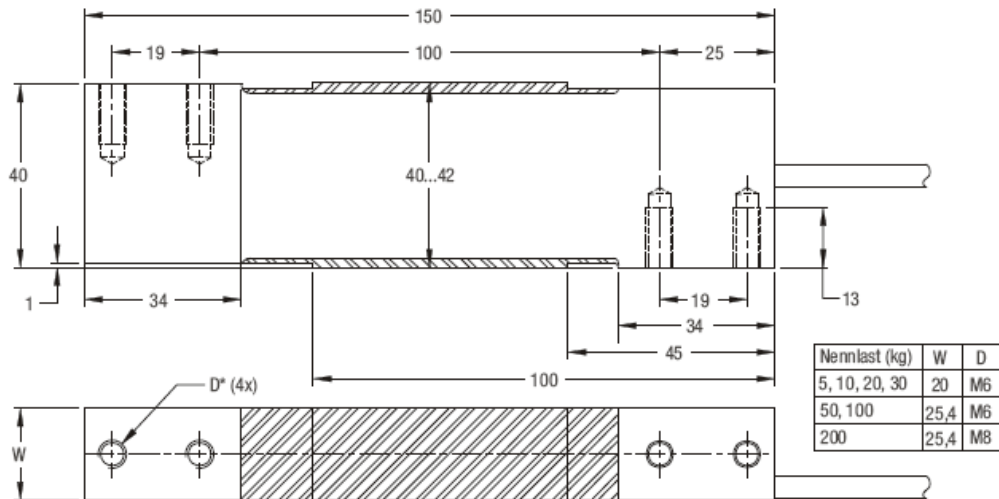
- Aluminium alloy construction
- Compatible with other sources
- Single point 400mm x 400mm platform
- Approved according to OIML R60

### Applications

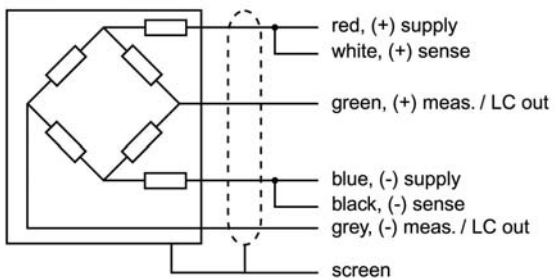
- Bench Scales
- Counting Scales
- Check Weighing Systems

Technical Data		C3MR	
Accuracy class (Combined error)		0.020	% C <sub>n</sub>
Maximum capacity	E <sub>max</sub>	5 / 10 / 20 / 30 / 50 / 100 / 200	kg
Maximum usable load	E <sub>u</sub>	150	% E <sub>max</sub>
Destructive load	E <sub>d</sub>	≥ 300	% E <sub>max</sub>
Safe side load	E <sub>Iq</sub>	100	% E <sub>max</sub>
Maximum number of LC intervals	n <sub>LC</sub>	3,000	
Minimum LC verification interval v <sub>min</sub> = E <sub>max</sub> /Y	Y	15,000	
Rated output	C <sub>n</sub>	2.0	mV/V
Tolerance on rated output	D <sub>c</sub>	≤ ± 10	% C <sub>n</sub>
Zero output signal	S <sub>min</sub>	≤ ± 5	% C <sub>n</sub>
Creep, during 30 min.	d <sub>cr</sub>	≤ ± 0.016	% C <sub>n</sub>
Temperature effect on S <sub>min</sub>	TK <sub>Smin</sub>	≤ ± 0.009	% C <sub>n</sub> / 10K
Temperature effect on C	TK <sub>C</sub>	≤ ± 0.010	% C <sub>n</sub> / 10K
Input impedance	R <sub>LC</sub>	413 ± 20	Ω
Output impedance	R <sub>0</sub>	350 ± 25	Ω
Insulation impedance (100V DC)	R <sub>I5</sub>	≥ 5	GΩ
Recommended supply voltage	B <sub>u</sub>	5 ... 15	V
Nominal ambient temperature range	B <sub>T</sub>	- 10 ... + 40	°C
Usable ambient temperature range	B <sub>Tu</sub>	- 20 ... + 65	°C
Nominal deflection	S <sub>nom</sub>	0.56 (E <sub>max</sub> =5kg); 0.46 (E <sub>max</sub> =10kg); 0.39 (E <sub>max</sub> =20kg); 0.38 (E <sub>max</sub> =30kg); 0.37 (E <sub>max</sub> =50kg); 0.39 (E <sub>max</sub> =100kg); 0.48 (E <sub>max</sub> =200kg)	mm
Cable length		1.5 (other lengths optional)	m
Cable type		6 conductor TPE cable (AWG 26), shield grounded (optional: shield floating)	
Sensor material		Aluminium	
Protection class (acc. to IEC 529)		IP67	

The technical data given here serve only as a product description and must not be interpreted as guaranteed characteristics in legal sense.



Dimensions in mm



Wiring diagram

Type	Order Number
MP 71/ 5 kg C3MR	9408 271 07005
MP 71/ 10 kg C3MR	9408 271 07010
MP 71/ 20 kg C3MR	9408 271 07020
MP 71/ 30 kg C3MR	9408 271 07030
MP 71/ 50kg C3MR	9408 271 07050
MP 71/ 100kg C3MR	9408 271 07110
MP 71/ 200kg C3MR	9408 271 07120

Sartorius Mechatronics T&H GmbH  
 Meiendorfer Straße 205  
 22145 Hamburg, Germany  
 Tel. +49.40.67960.303  
 Fax +49.40.67960.383  
 www.sartorius-mechatronics.com